

# pvfs2-client Design Document (DRAFT)

PVFS Development Team

April 2003

## 1 Introduction

The primary role of the pvfs2-client daemon is to efficiently *marshal* operation requests and data from the kernel's VFS (*Virtual File System*, or *Virtual Filesystem Switch*) layer to the pvfs2-server, and return responses from the pvfs2-server(s) back to the VFS layer. This involves waiting for file system and I/O requests, performing operations against the pvfs2-server application(s), and passing responses back to the Linux kernel's VFS layer. The data medium for the communication between the VFS request and the pvfs2-client application is the /dev/pvfs2 device node. An interface that will allow incoming unexpected requests from the /dev/pvfs2 device node is required, and using the existing BMI interface is preferred.

Figure 1 illustrates the architecture of several components of PVFS2. This document will focus specifically on the pvfs2-client application.

## 2 Motivation for the pvfs2-client Application

Currently, our entire code base exists as user space code. This includes all of our networking support (through the *BMI* and *Flow Interfaces*), and our non-blocking request handling architecture through the *Job Interface*.

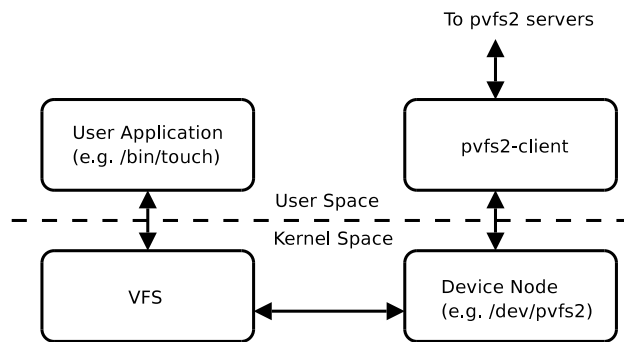


Figure 1: High Level PVFS2 Architecture

The pvfs2-server already uses these interfaces to manage multiple simultaneous operations in flight at once. Similarly, it is highly desirable to have a pvfs2-client application that can issue and manage multiple simultaneous operations at once when communicating with the pvfs2-servers. Therefore, at least in the short term, it would be most appropriate to leverage as much of our existing code as possible. A user-space application is required to make use of this code, and thus the need for the pvfs2-client application to bridge the gap between the Linux kernel's VFS layer and the *System Interface*.

### 3 pvfs2-client Application Architecture

The pvfs2-client application consists of a set of state machines roughly corresponding to all file system and I/O operations that can be requested from the VFS. At a high level, the pvfs2-client application appears to share a common architecture with the pvfs2-server application. The most notable distinction between the pvfs2-client architecture and the pvfs2-server architecture is the source of the unexpected requests. On the pvfs2-server, unexpected requests come from over the network through the BMI Interface. The pvfs2-client receives unexpected messages from the /dev/pvfs2 device node. It would be ideal if the BMI Interface could be used to monitor the /dev/pvfs2 device node.

One responsibility of the pvfs2-client application is to wait for jobs in progress to complete. Waiting on pending jobs is implemented as a non-blocking operation against the existing job interface using the call `job_testcontext`. This call returns a list of unexpected or completed jobs that were submitted previously by states of the various state machine operation implementations.

For each job returned from `job_testcontext`, the pvfs2-client application checks if the job is an unexpected request. If the job *is* an unexpected request, it initializes an appropriate state machine for that job. Regardless of whether or not the job was unexpected, the state of each job is advanced to the next until a blocking operation is encountered.

Unexpected requests are delivered to the pvfs2-client application only from the /dev/pvfs2 device node that the pvfs2-client application monitors through the job interface. These requests are generated and passed up from the Linux kernel's VFS layer by the PVFS2 kernel module that implements the VFS operations.

The pvfs2-client has a similar processing loop as the pvfs2-server:

```
while (pvfs2-client application is running)
{
    ...
    wait on pending jobs in progress and expected requests
    ...
    foreach job returned
        if job is an unexpected request
            initialize appropriate operation state machine
        end if
    ...
    while completions occur immediately
```

```

        advance to next state in state machine
    end while
end foreach
}

```

## 4 Limitations of the Existing System Interface

Currently, all client interaction to a pvfs2-server is done through the *System Interface* API. This interface provides a set of file system and I/O operations to be performed against the pvfs2-server(s), but suffers from several major limitations in its current state. These limitations can be described briefly as:

- *Semantic Limitations*: the current implementation provides a blocking interface to all operations. We already know that a non-blocking interface is required for efficient access through other existing non-blocking interfaces such as ROMIO.
- *Reusability Limitations*: the current implementation performs many blocking operations. This cannot be used *as is* in the proposed non-blocking state-machine oriented architecture of the pvfs2-client.

A proposed redesign of the System Interface implemented in terms of reusable state machines can solve these limitations, as discussed below.

## 5 pvfs2-client Request Servicing

Operation request servicing in the pvfs2-client application will be implemented by state machines. That is, for each type of request that can be handed up from the PVFS2 kernel module, a matching state machine will exist to service it. The types of operation requests required will roughly correspond to all of the possible operations available through the System Interface API. For the proposed pvfs2-client architecture, it is clear that a non-blocking implementation of the System Interface is desirable for the state machine architecture. Further, to encourage code re-use, each operation in the *System Interface* can be expressed as a state machine. Implementing the core functionality of the System Interface methods in terms of state machines allows an opportunity for blocking *and* non-blocking interface implementations, heavier code re-use, and design simplicity.

We can think of all pvfs2-client operations as having a similar structure, as depicted in Figure 2. What we see here is a generic state machine implementing an operation. For all operations there will be a *use specific* initialization, execution of some core routines (i.e. functionality provided by the current System Interface), and a use-specific notification of status and completion. If the core functionality of each System Interface routine were implemented in terms of a state machine, the execution of a core routine could be embedded as a nested state machine within the operation specific state machine.

Figure 2 shows a complete operation state machine, along with the embedded (nested) state machine that implements core functionality of a System Interface call. The first state called *init* represents the use specific

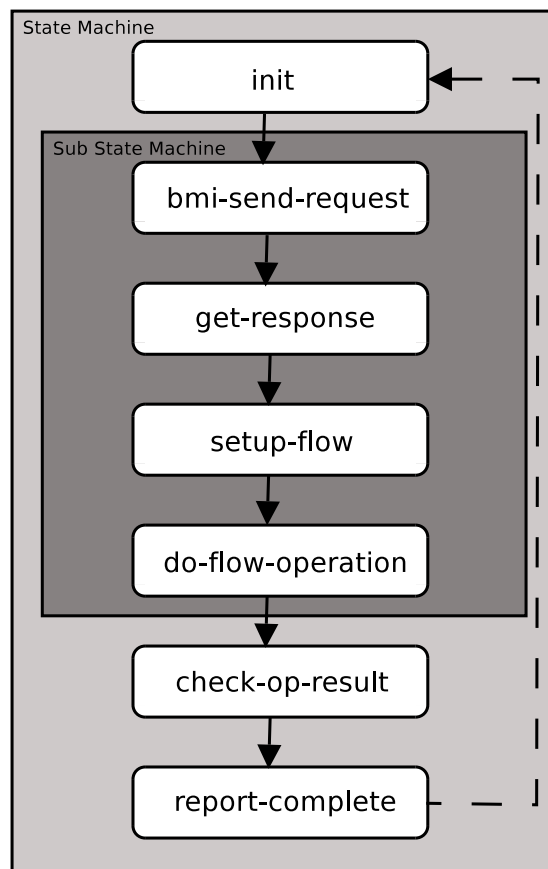


Figure 2: Operation Servicing State Machine (w/nested core state machine)

initialization state. Each operation may have a different initialization phase, but at the very least, the source and target endpoints for the Flow (to be performed inside the nested state machine) are selected. Following initialization, the nested state machine is executed, performing the core operation requested. After this, the operation state machine checks the status of the performed operation to properly handle error reporting. Finally, the state is advanced to the initial state of the state machine, which is the default action when the operation has completed.

In order to represent the core functionality of a System Interface method as a re-useable state machine, we must take advantage of the source and target endpoint specifications allowed by the existing *Flow Interface*. Assuming it is possible to know the source and target endpoints of the Flow prior to executing the System Interface core functionality, it can be re-used by embedding it as a nested state machine in the pvfs2-client architecture, *and* shared between the blocking and non-blocking System Interface implementations. The requirement for this is that the source and target endpoints of the Flow be established before using the core functionality state machine. In Figure 2, for example, the pvfs2-client application may specify that the Flow's target endpoint should be the /dev/pvfs2 device node.

## **6 Non-blocking and Blocking System Interface Implementations**

Non-blocking and blocking System Interface methods (as shown in Figure 3) can use the same core functionality once implemented as a state machine. The blocking version will manually advance the state machine internal to the call and not return until the operation has completed. The non-blocking implementation will start the state machine and offer a mechanism for testing operation completion. For the non-blocking interface, some method of asynchronous progress must be provided. This can be done either with a background thread, or completing work during a test for completion.